

# CHEMISAFE® FIRE DRUM

CERTIFIED SAFETY CABINETS  
FOR INFLAMMABLES

PUT INTO DRUMS OR BIG CONTAINERS



**INFLAMMABLE**



**SAFETY CABINETS  
FOR THE STORAGE OF INFLAMMABLES  
PUT INTO DRUMS OR BIG CONTAINERS  
CERTIFIED FIRE-RESISTANT FOR 90 MINUTES  
IN ACCORDANCE WITH CLASS FWF  
AND CERTIFIED BY BVOI  
TO DIN 12925-1 04-1998.**



# CHEMISAFE® FIRE DRUM



**CERTIFIED SAFETY CABINETS FOR INFLAMMABLES  
PUT INTO DRUMS OR BIG CONTAINERS.**



**THEY ARE CERTIFIED FIRE RESISTANT FOR 90 MINUTES, ACCORDING TO CLASS FWF.  
CERTIFIED BY BVQI No. 07/001 TO DIN 12925-1 04/98.**

**C**ompletely built in electrogalvanized steel of 1/1 and 5/2 mm gauge, cold pressure-formed, with external monolithic casework painted with acid-resistant epoxy powders and passage in thermal gallery at 200 °C. Special calcium silicate insulation (DIN 4102) CLASS "0" REI 120, which releases water molecules to reduce the internal temperature in case of fire. High temperature rockwool panels (Fibroceramic free) fixed with ceramic adhesive (800 °C); certificate MO CSTB No. 9234624.3, and non-combustibility RINA certificate. **Certified according to the new DIN 12925-1 standard, updated in April 1998 with FWF technique (thermic cuttings).**



## CHEMISAFE® FIRE DRUM "O"



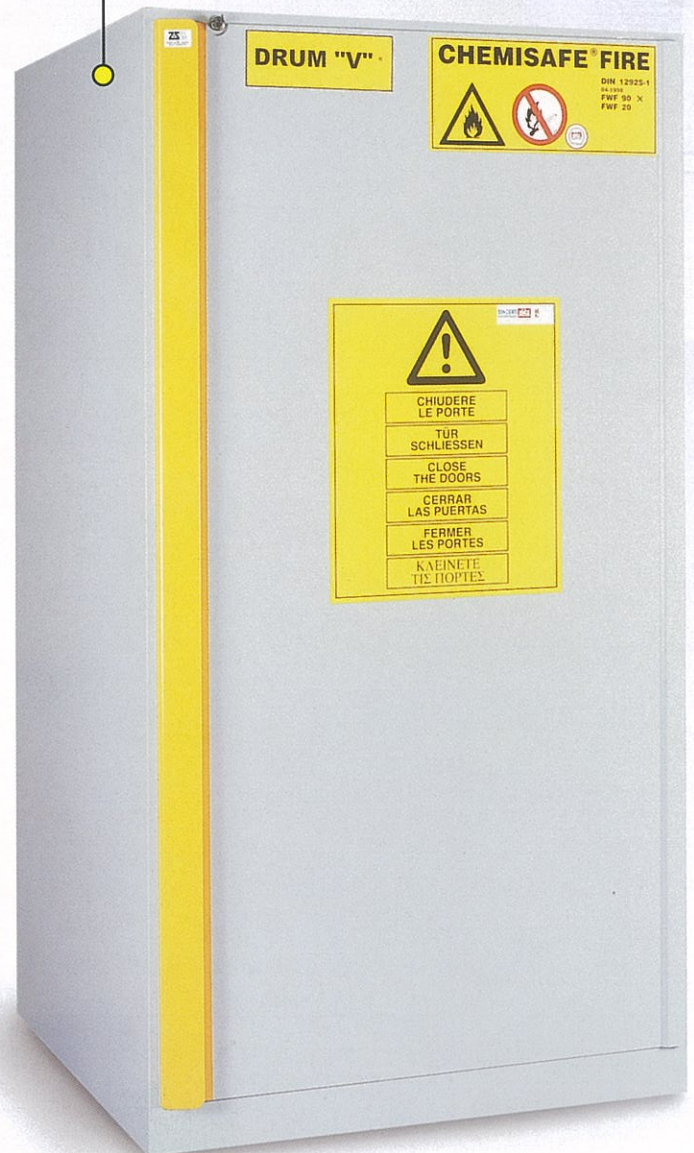
**Horizontal drums - 960 litres capacity**  
**External dimensions: 900x1300x1300 mm (WxDxH)**  
**Internal dimensions: 740x1140x1140 mm (WxDxH)**  
**Weight: 380 Kg**

- **HYDRAULIC DOOR CLOSURE: AUTOMATIC AT EVERY DOOR OPENING.**
- **DOOR CLOSING DEVICE:** thermic device, with permits the door closing when the temperature near the cabinets is higher than 50 °C.
- **Certified AUTOMATIC CLOSURE SYSTEM (70/100 °C)** for the inlet and exhaust air ducts, located on the cabinet's roof, **MAINTENANCE FREE.**
- **EJECTION HOLE diam. 100 mm.**
- **SPARK RESISTANT PURE IRON HINGE WITH BRASS PLUG.**
- **THERMOEXPANDING SEAL,** about 30+30 mm (DIN 4102).
- **SPILLAGE TROUGH** with removable grill.
- **EARTHING CLAMP** to avoid electrostatic discharges.
- **CLOSURE** with lock and key.

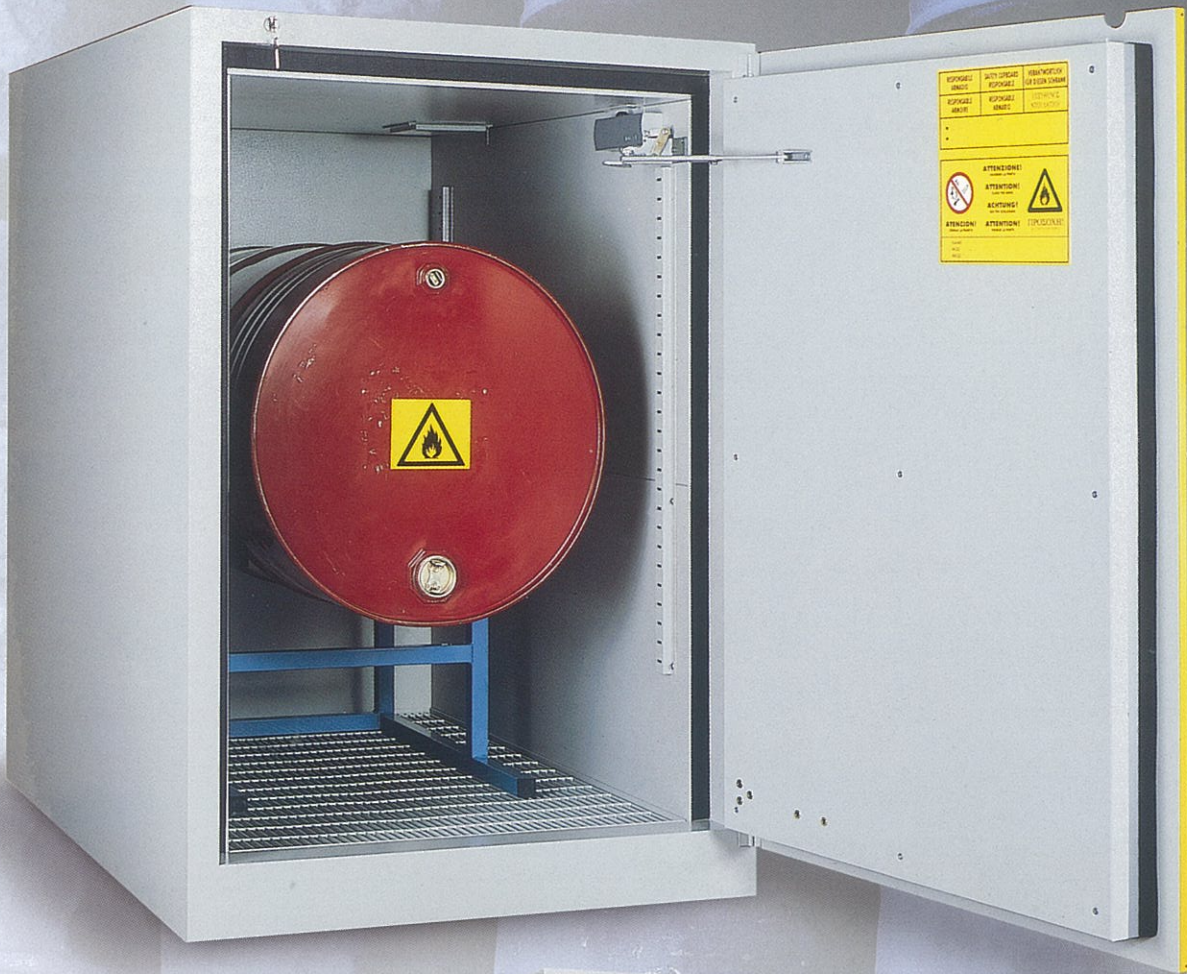
## CHEMISAFE® FIRE DRUM "V"



**Vertical drums - 800 litres capacity**  
**External dimensions: 900x900x1700 mm (WxDxH)**  
**Internal dimensions: 700x740x1510 mm (WxDxH)**  
**Weight: 380 Kg**



**90'**  
**FWF**



**CHEMISAFE®**  
**FIRE DRUM**