



Laboratory Equipment Manufacturer  
www.mrclab.com



# INSTRUCTION MANUAL FOR **HOG-020/020D** HOMOGENIZERS

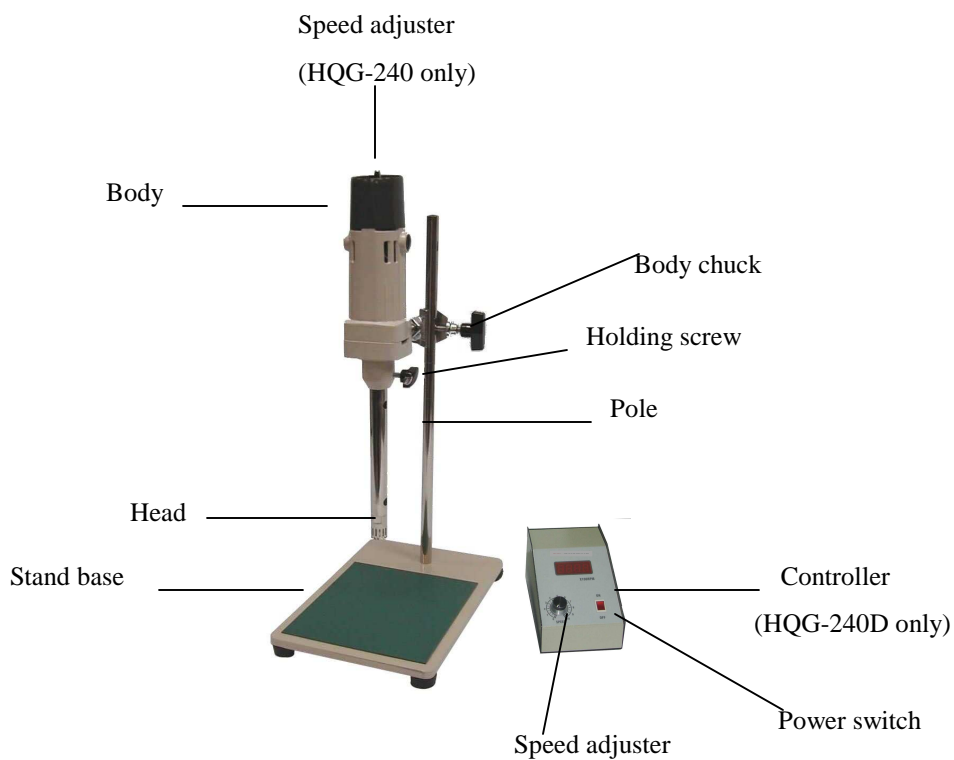


**PLEASE READ THIS MANUAL CAREFULLY BEFORE OPERATION**

3, Hagavish st. Israel 58817 Tel: 972 3 5595252, Fax: 972 3 5594529 [mrc@mrclab.com](mailto:mrc@mrclab.com)

MRC.VER.02-11.10

## *I · OUTLINE*



## *II · SPECIFICATION*

Model	HQG-240 / HQG-240D
Power	AC 110 / 220V , 50 / 60 Hz
Motor	AC 250W
Max. speed (rpm)	26,000
Driver	Electronic type
Safety device	Fuse
Coating	Medicine-resisting
Weight (kg)	7

### ***III, OPERATION INTRODUCTION***

1. Put container on stand base and keep distance between the head and bottom of container.
2. Turn the speed button to the end of left side.
3. Put plug into socket and then switch to be “ON” to start it.
4. Adjust speed button to be proper speed per your demand.
5. When you stop it, please turn speed button to the end of left side.
6. Switch the key to be “ OFF ”.

### ***IV, ATTENTION***

1. Do not start it without any material inside container.
2. The speed has to match material’s viscosity to avoid head at empty rotation.
3. Bad fluid is not suitable to the instrument
4. Heads are changeable, please loose the holding screw and take head off.
5. After you clean or change head, please must fix and screw it tightly.

### ***V, INSPECTION***

When the machine is out of order, please check following possible facts:

1. Fuse burns out or not.
2. Carbon brushes at both sides of motor use out or contact improperly.
3. If carbon brushes use out, then take it off and renew it.

**If above have been checked and useless, please send the machine back to agent for further examination and maintenance.**

## ***VI, APPLICATION OF HEADS***

<b>Model</b>	<b>Applicable range</b>
I GP/2232	To homogenize or mix on cell tissue in micro volume.
I GP/2472	<ol style="list-style-type: none"><li>1. To disperse plant or animal tissue.</li><li>2. To treat suspensions and emulsions.</li><li>3. Homogenizing and mixing.</li><li>4. Extraction function.</li></ol>
I GP/4222	<ol style="list-style-type: none"><li>1. To disperse plant or animal tissue.</li><li>2. To treat suspensions and emulsions.</li><li>3. Homogenizing and mixing.</li><li>4. Extraction function.</li></ol>
I GP/5222	<ol style="list-style-type: none"><li>1. To disperse organic and inorganic matters.</li><li>2. Homogenizing and mixing.</li><li>3. Extraction function.</li></ol>

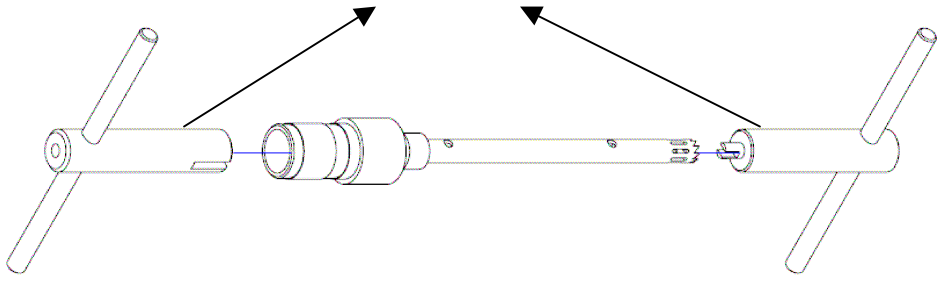
## ***VII, SPECIFICATION OF HEADS***

<b>Model</b>	<b>Circumference Speed (m/s)</b>	<b>Capacity (ml)</b>	<b>Size (mm)</b>
I GP/2232	6.3	0.3~10	φ7 x 130
I GP/2472	11.3	2~250	φ12 x 170
I GP/4222	20.1	20~2000	φ20 x 200
I GP/522	29.9	100~3000	φ30 x 250

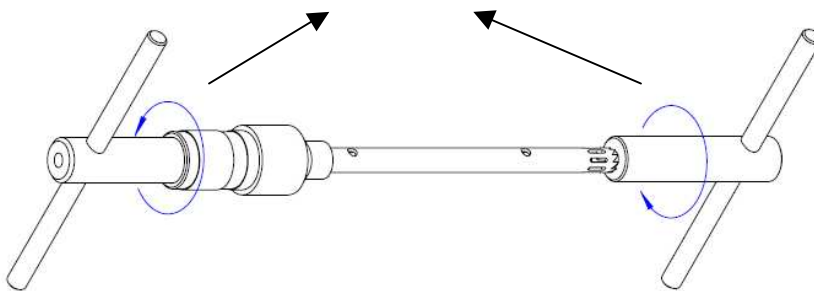
TO OPEN AND SEPARATED

**I GP/2232**

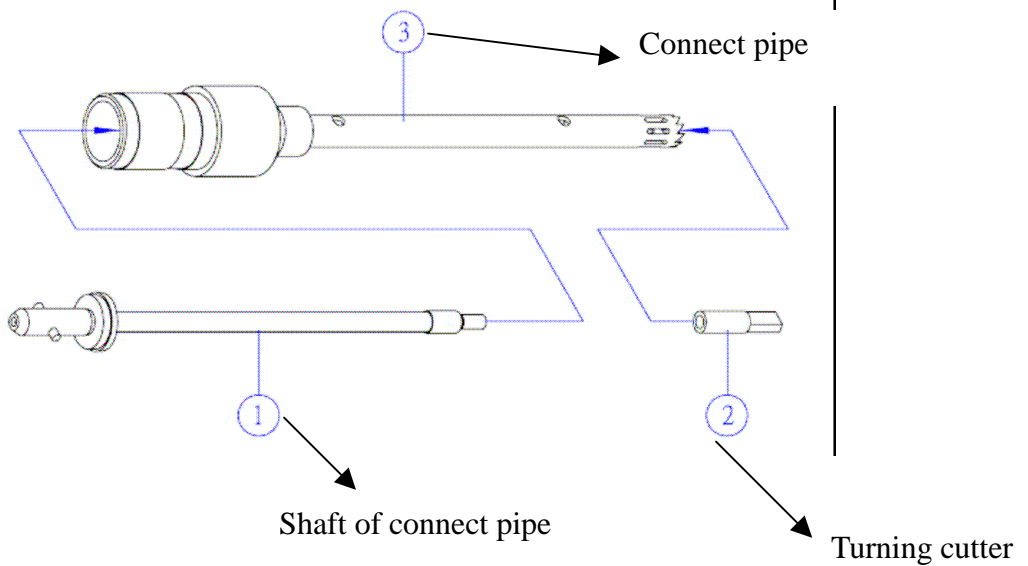
Insert the tools into the shaft



Turn the tools to open



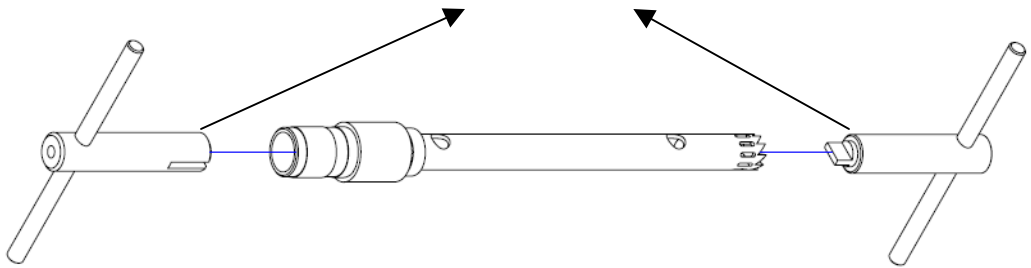
After open the shaft , 3 main parts from shaft I GP/2232 as follows



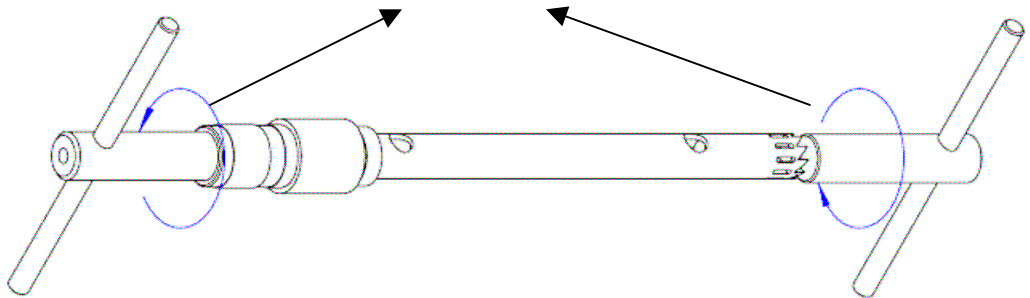
TO OPEN AND SEPARATED

## I GP/2472

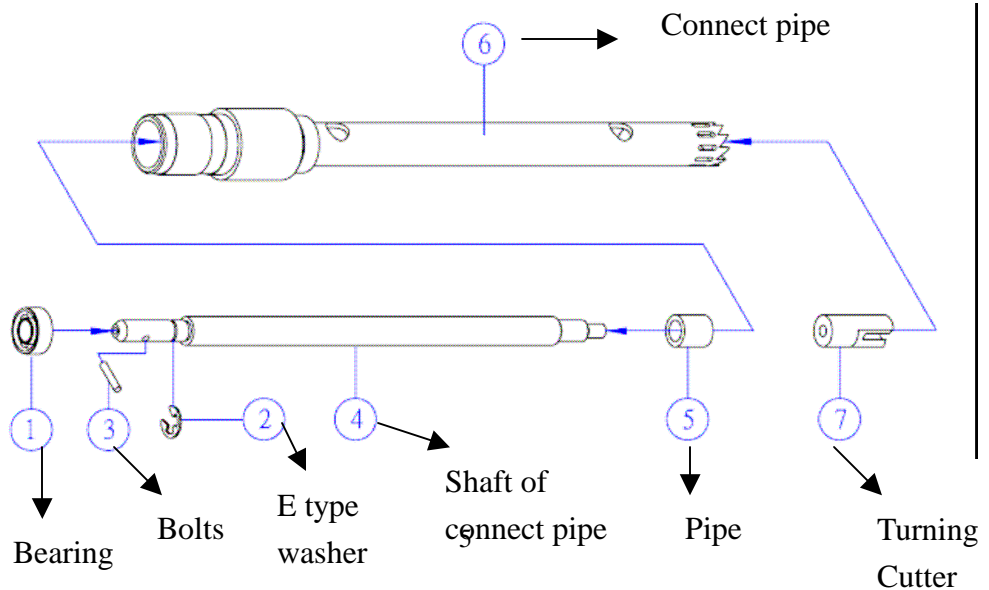
Insert the tools into the shaft



Turn the tools to open

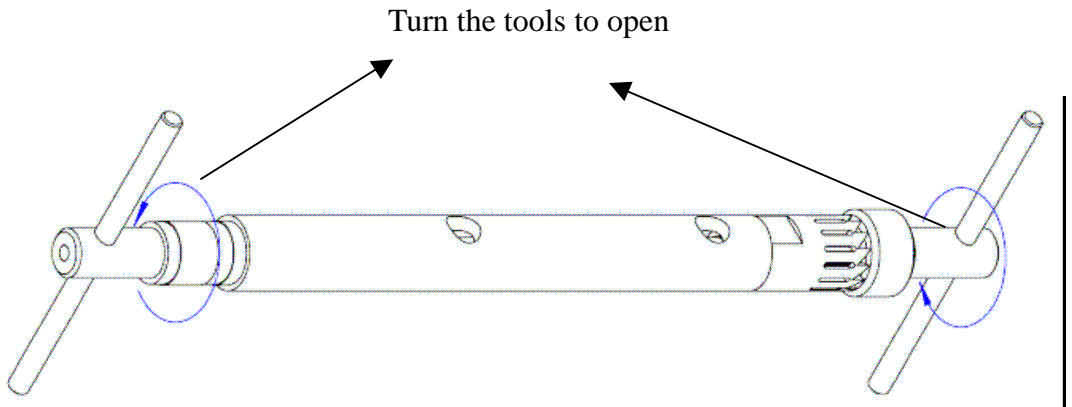
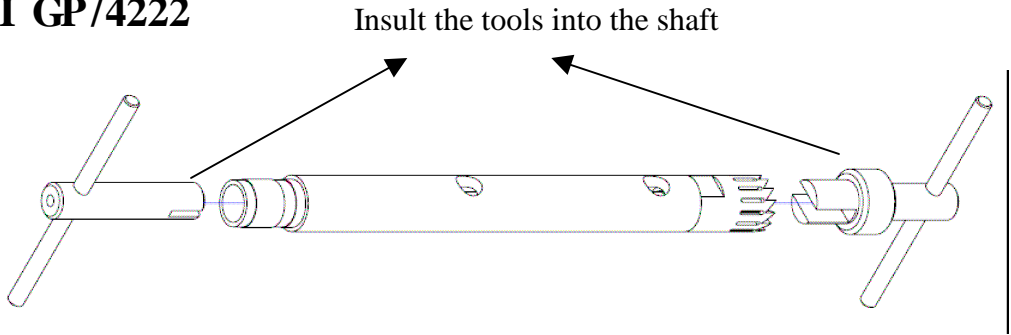


After open the shaft , 7 main parts from shaft I GP/2472 as follows

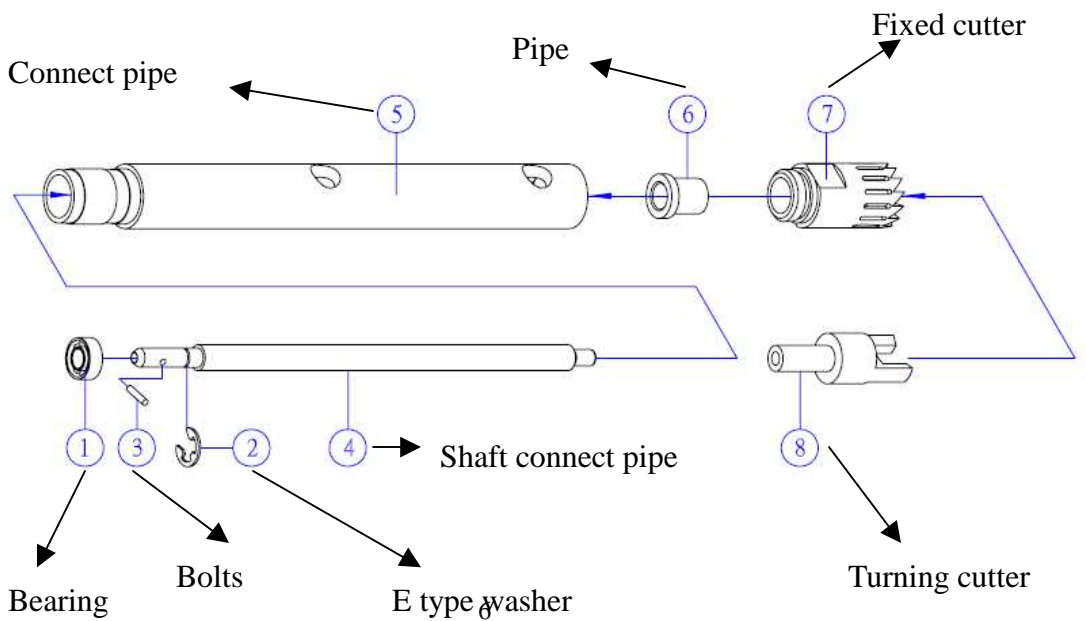


# TO OPEN AND SEPARATED

## I GP/4222

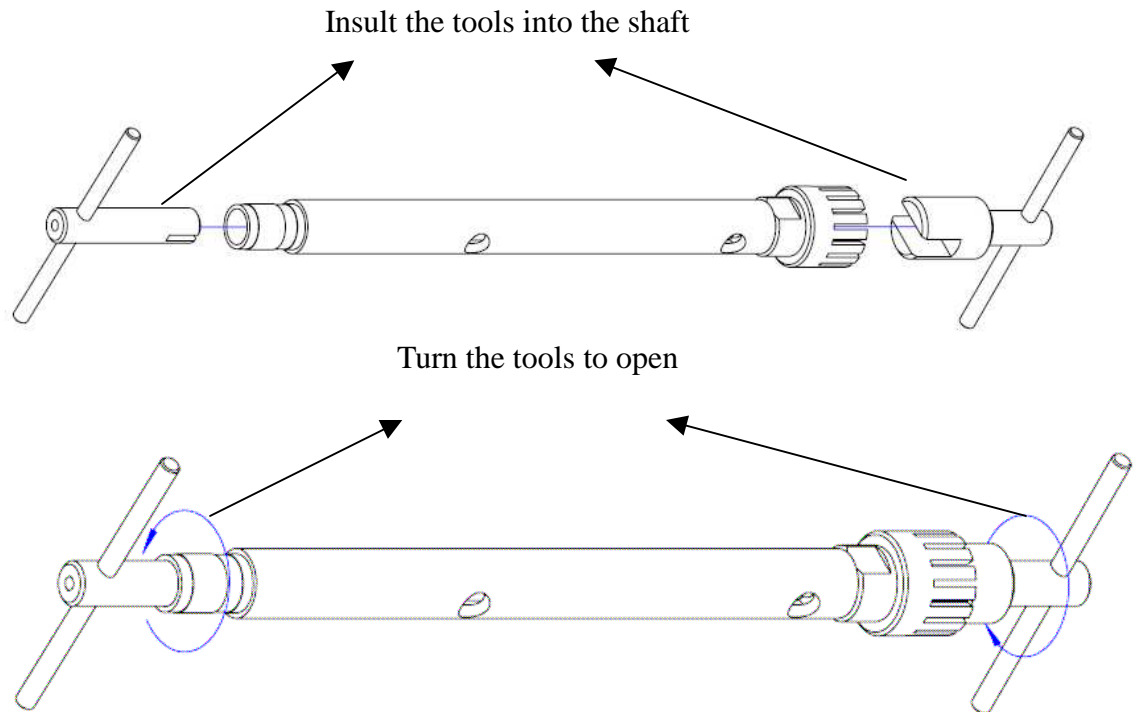


After open the shaft , 8 main parts from shaft I GP/4222 as follows

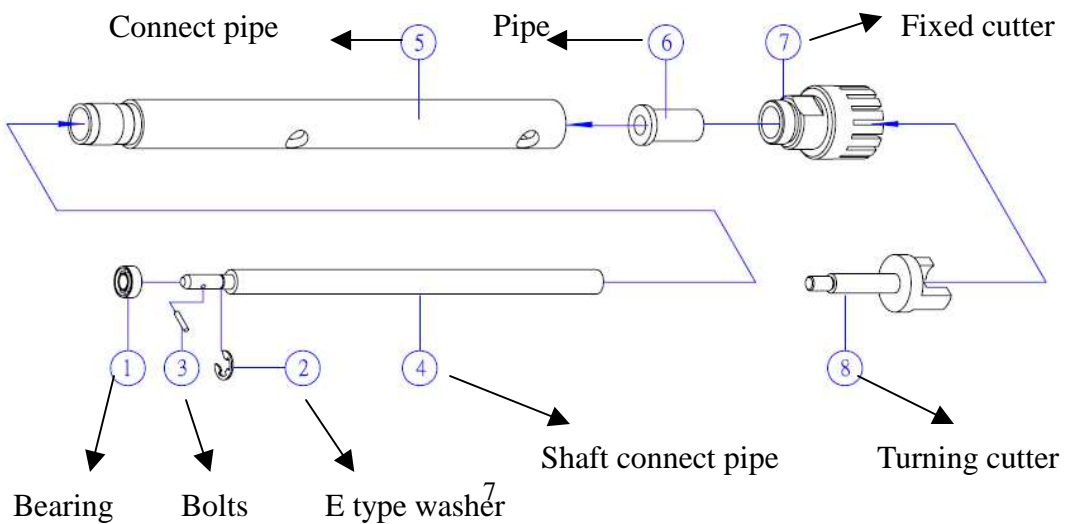


TO OPEN AND SEPARATED

## I GP/5222



After open the shaft , 8 main parts from shaft I GP/5222 as follows

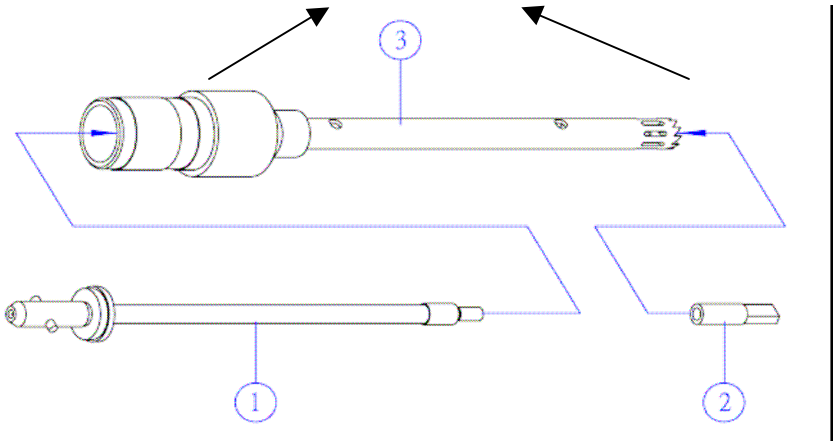




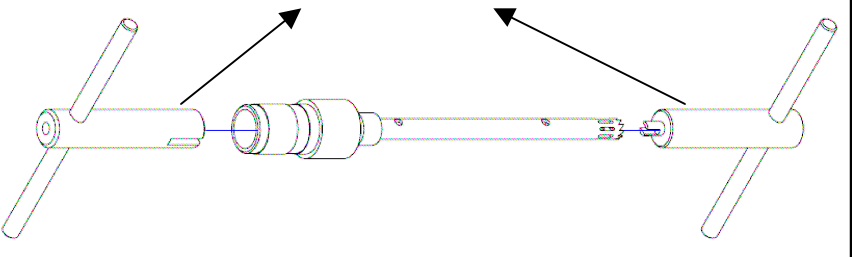
TO ASSEMBLY

I GP/2232

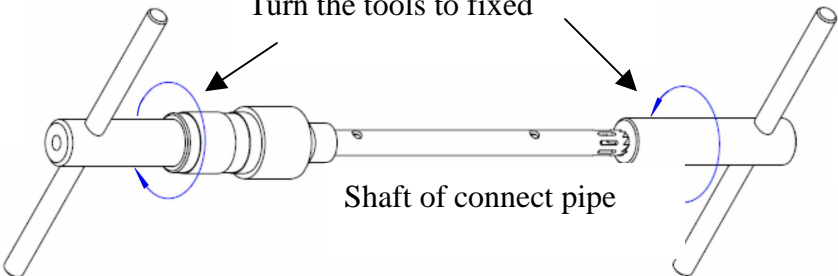
Put each parts into Accordinly with the drawing



Insult the tools into the shaft



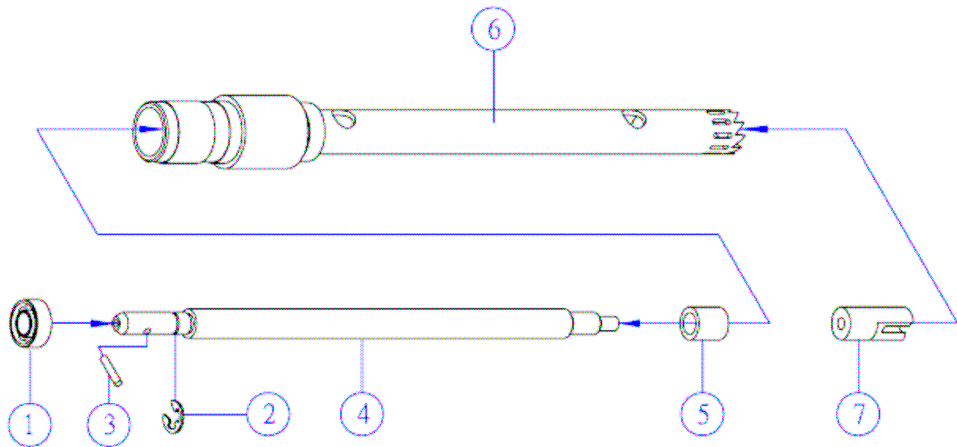
Turn the tools to fixed



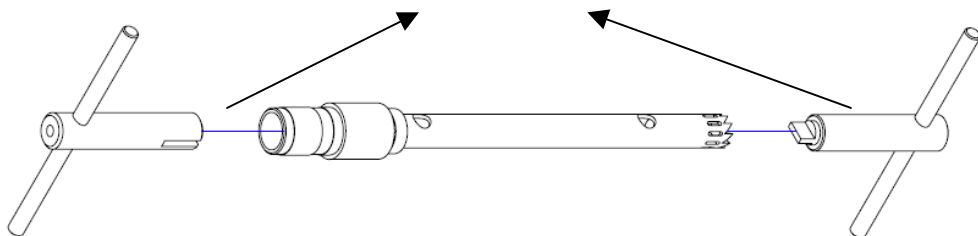
TO ASSEMBLY

## I GP/2472

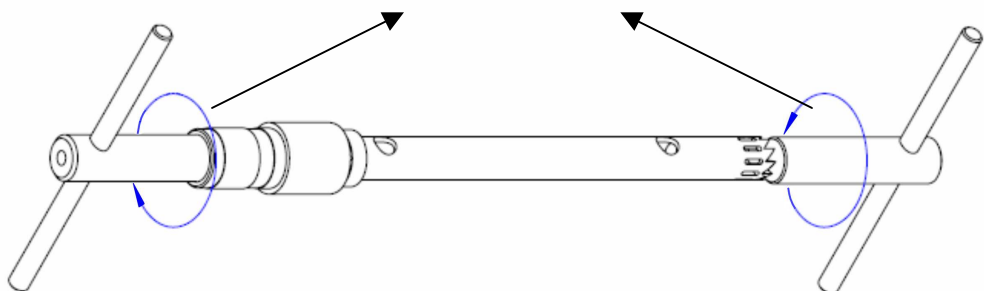
Put each parts into Accordingly with the drawing



Insult the tools into the shaft



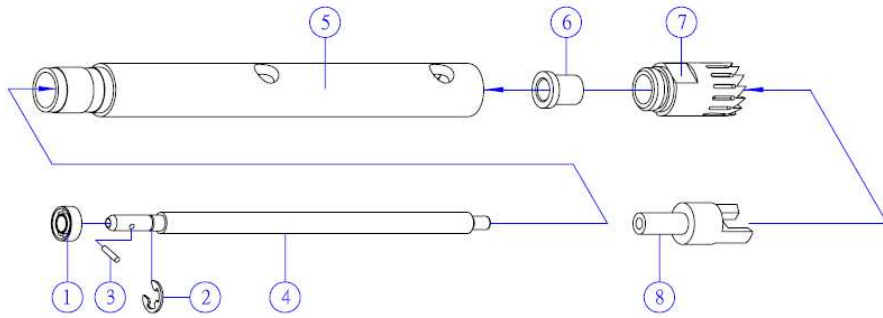
Turn the tools to fixed



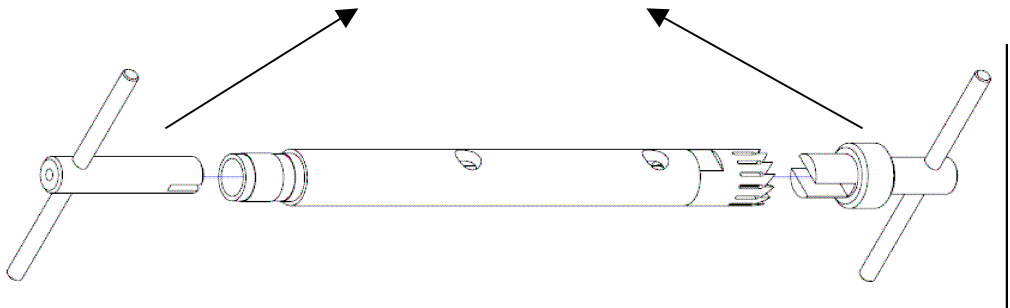
# TO ASSEMBLY

## I GP/4222

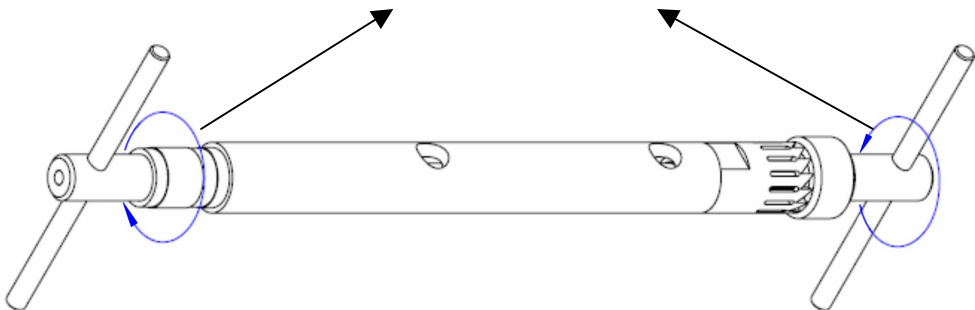
Put each parts into Accordinly with the drawing



Insult the tools into the shaft



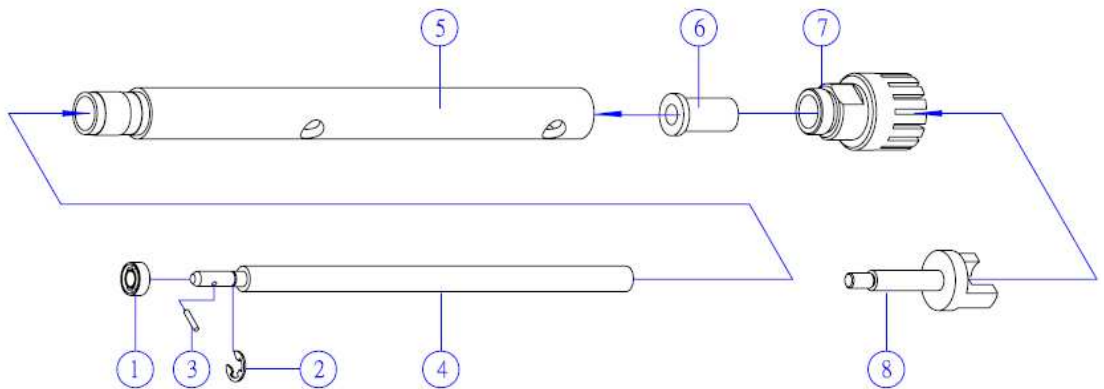
Turn the tools to fixed



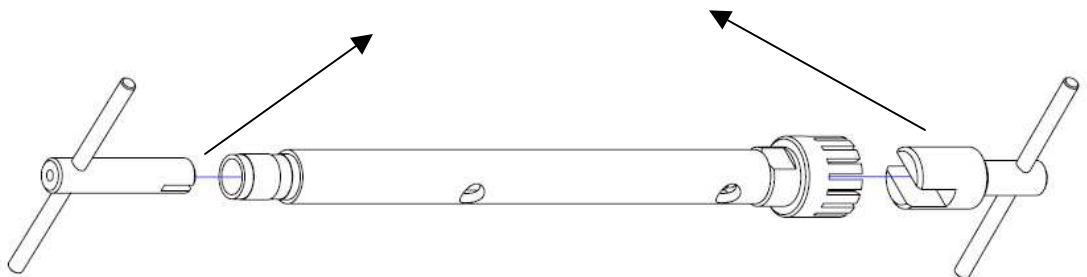
TO ASSEMBLY

## I GP/5222

Put each parts into Accordinly with the drawing



Insult the tools into the shaft



Turn the tools to fixed

