

# Manual Base Frame SM100



Translation



**Copyright**

© Copyright by  
Retsch GmbH  
Haan, Retsch-Allee 1-5  
D-42781 Haan  
Federal Republic of Germany

|          |  |           |
|----------|--|-----------|
| <b>1</b> | <b>Notes on the Operating Manual .....</b> | <b>4</b>  |
| <b>2</b> | <b>Assembly Instructions .....</b>         | <b>4</b>  |
| 2.1      | Frame assembly .....                       | 4         |
| <b>3</b> | <b>Index .....</b>                         | <b>10</b> |

## 1 Notes on the Operating Manual

This operating manual is a technical guide on how to operate the device safely and it contains all the information required for the areas specified in the table of contents. This technical documentation is a reference and instruction manual. The individual chapters are complete in themselves.

Familiarity (of the respective target groups defined according to area) with the relevant chapters is a precondition for the safe and appropriate use of the device.

This operating manual does not contain any repair instructions. If faults arise or repairs are necessary, please contact your supplier or get in touch with Retsch GmbH directly.

Application technology information relating to samples to be processed is not included but can be read on the Internet on the respective device's page at [www.retsch.com](http://www.retsch.com).

### Changes

Subject to technical changes.

### Copyright

Disclosure or reproduction of this documentation, use and disclosure of its contents are only permitted with the express permission of Retsch GmbH.

Infringements will result in damage compensation liability.

## 2 Assembly Instructions

### 2.1 Frame assembly

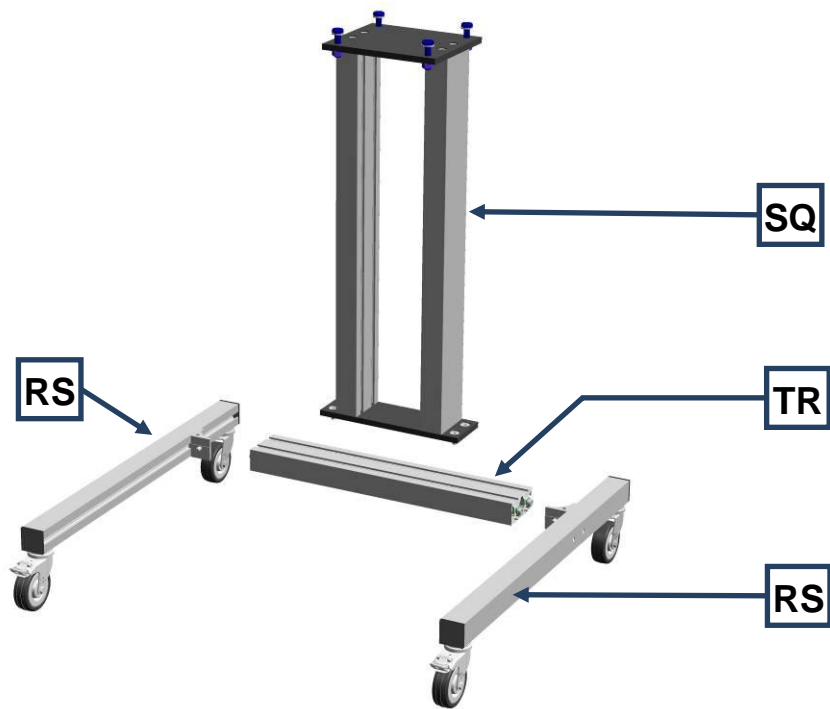


Fig. 1: Components of the stand

The components come pre-assembled to simplify assembly of the frame.

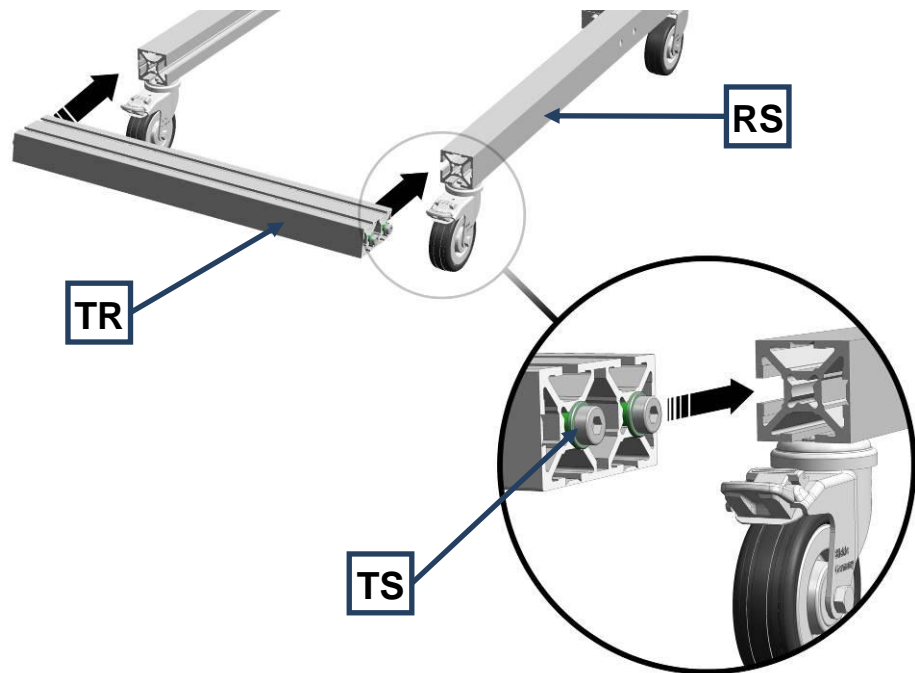


Fig. 2: Assembling the crossbar

- Where necessary slightly loosen the four screws (**TS**) on the crossbar (**TR**).
- Slide the crossbar into the lateral guides of the left and right roller track (**RS**).

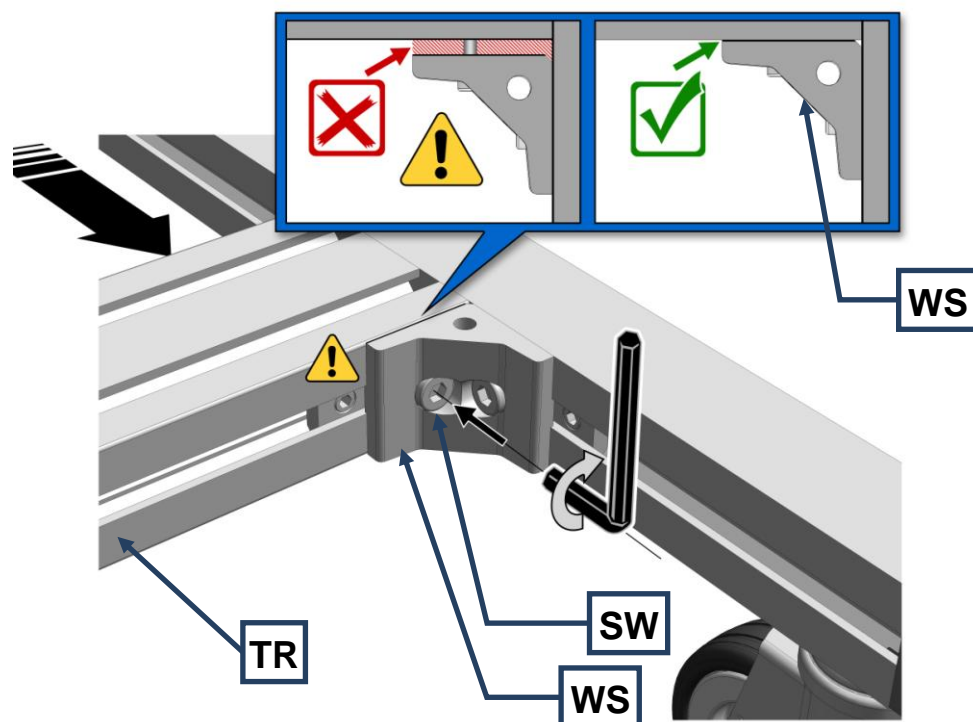


Fig. 3: Fastening the crossbar angle bracket

NB

Ensure that the crossbar (TR) is aligned flush with the pre-assembled angle section (WS).

Tighten the screw on the left and right of the angle section (SW).

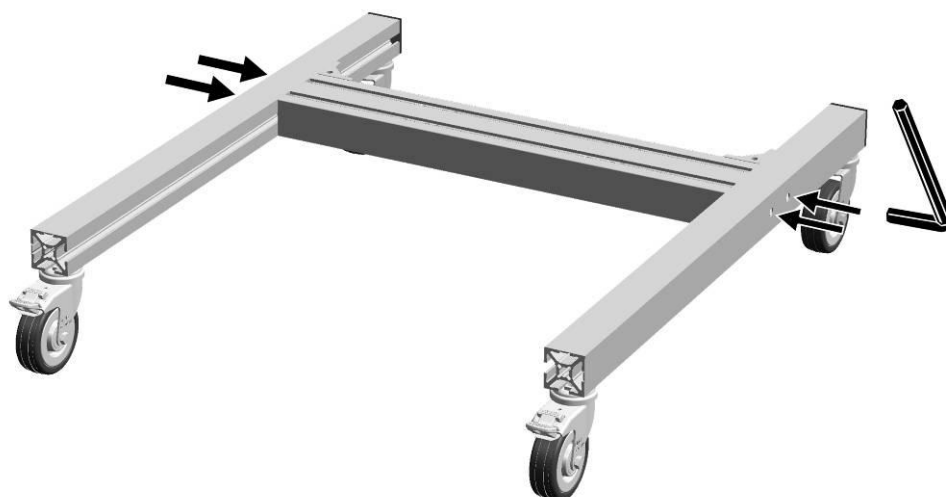


Fig. 4: Screwing the crossbar tight

- Tighten the four Allen screws.

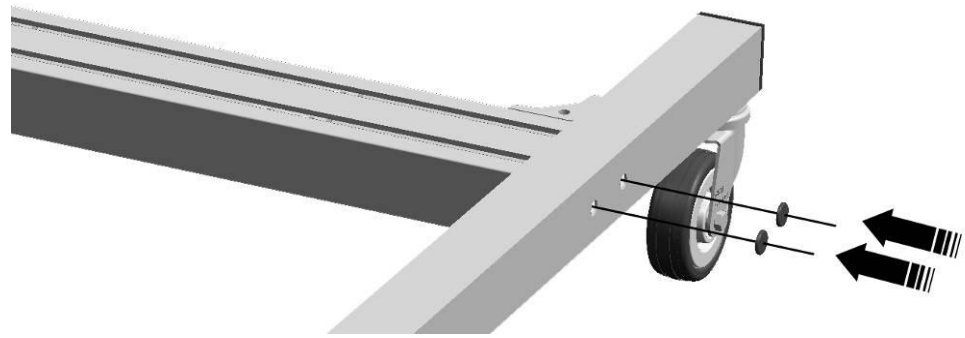


Fig. 5: Mounting the side protective caps

- Place the four black plastic caps on the openings.

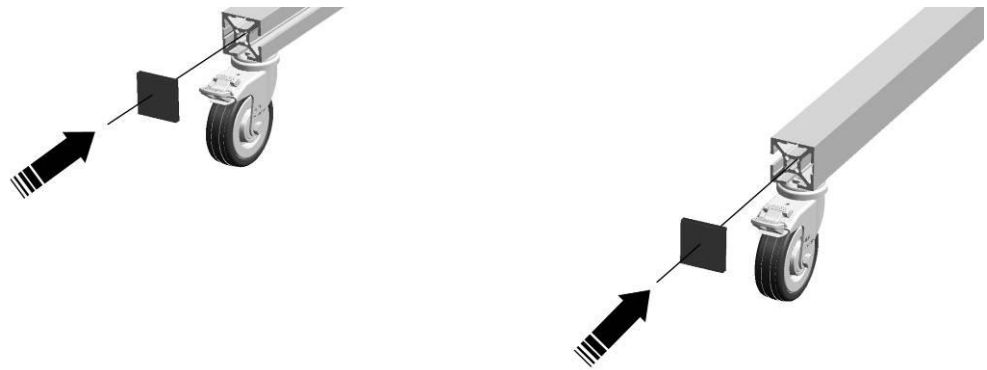


Fig. 6: Mounting the front protective caps

- Place the two caps on the ends of the roller track.

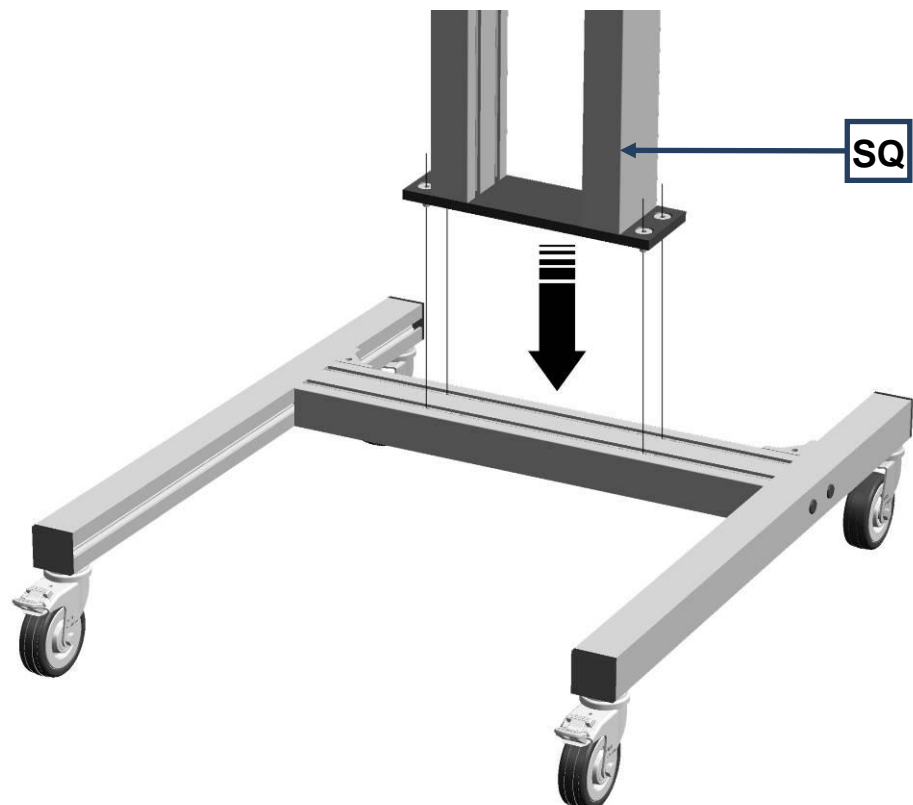


Fig. 7: Placing the crossbar on the stand

- Place the stand (SQ) on the crossbar.

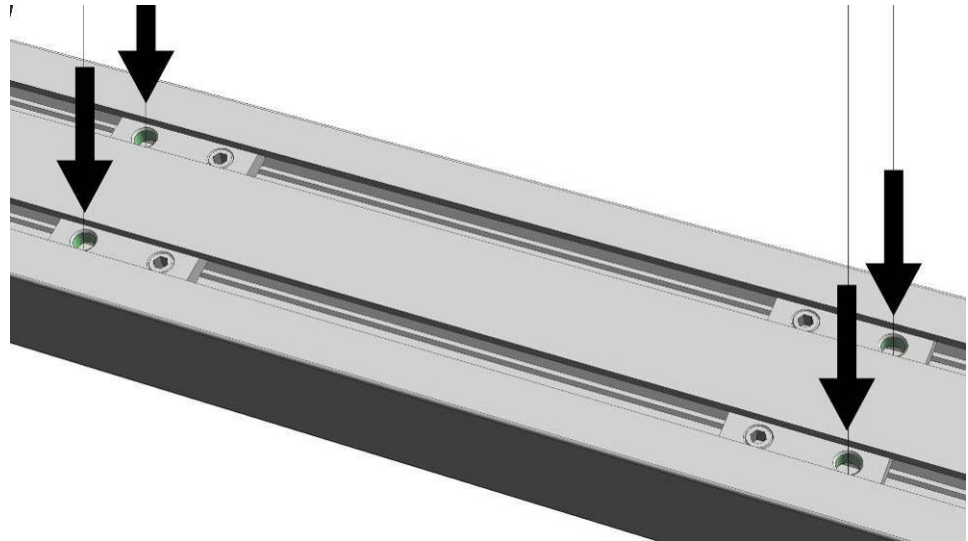


Fig. 8: Points for securing the stand

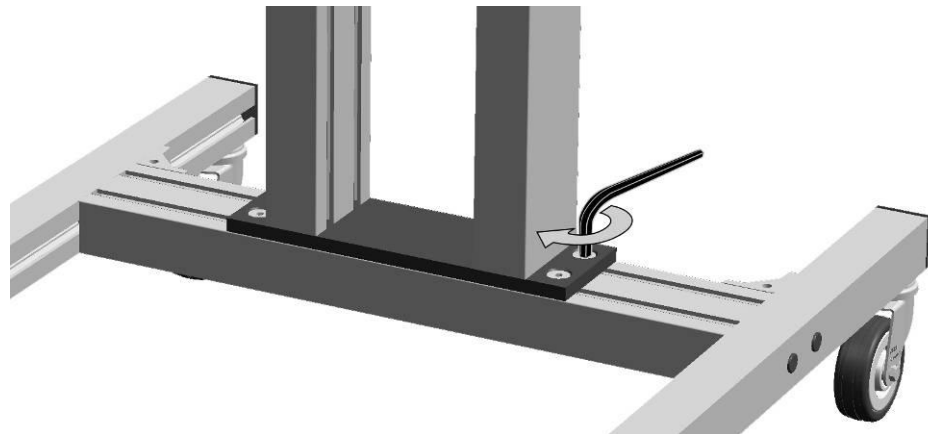


Fig. 9: Screwing the stand onto the crossbar

- Screw the stand (SQ) onto the crossbar.

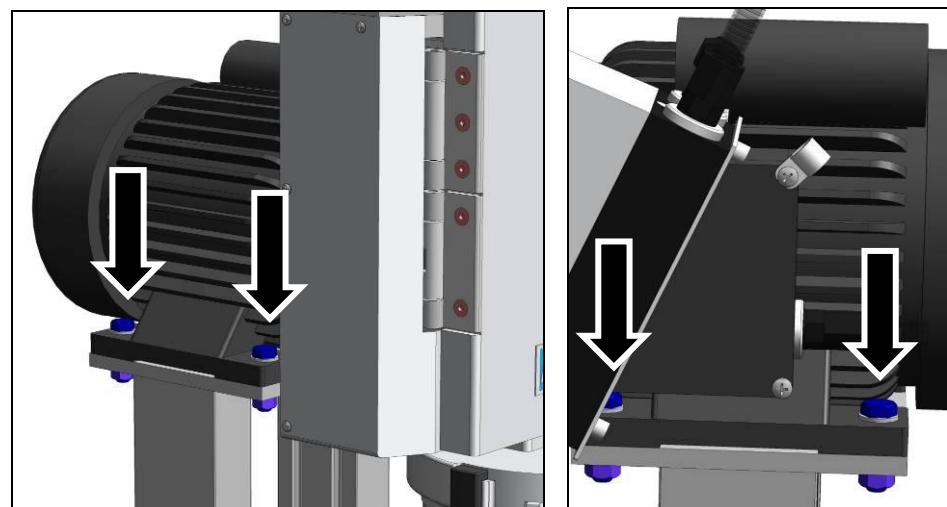


Fig. 10: Assembling the SM 100

- Then place the SM100 on the base frame.



- Using the 4 screws, screw the SM100 housing tightly onto the base frame.

### 3 Index

|                                 |   |                                    |   |
|---------------------------------|---|------------------------------------|---|
| <b>A</b>                        |   | <b>N</b>                           |   |
| Assembly Instructions.....      | 4 | Notes on the Operating Manual..... | 4 |
| <b>B</b>                        |   | <b>S</b>                           |   |
| befestigen Winkel-Traverse..... | 6 | Schutzkappen .....                 | 7 |
| <b>C</b>                        |   | Ständer Einzelteile .....          | 5 |
| Changes .....                   | 4 | <b>T</b>                           |   |
| Copyright .....                 | 4 | Traverse montieren.....            | 5 |
| <b>G</b>                        |   | <b>U</b>                           |   |
| Gestell.....                    | 4 | Untergestell.....                  | 4 |
| <b>M</b>                        |   |                                    |   |
| Montage des Untergestells ..... | 4 |                                    |   |