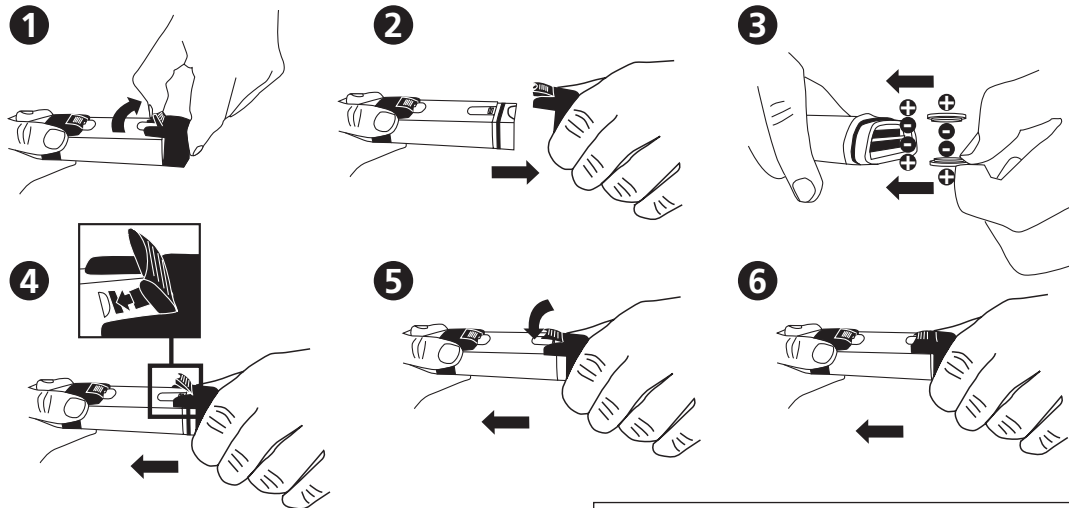




SD 70

Con

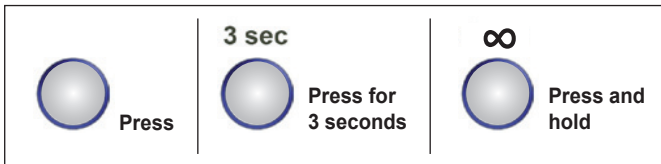
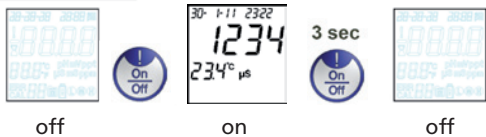
Insert the batteries



MEASUREMENT

Remove protective cap from the probe

A. Power ON/OFF



Automatically turns off after 8 minutes of inactivity.

B. Lock/Unlock Data



Possible slight delay after pressing before freeze of the data (!).

C. Backlight ON/OFF



D. Store Data



After 3 sec. the file no. temporarily appears on the display, e.g. 01. Once the storage has reached max. capacity, the data will overwrite the oldest files.

CON CALIBRATION

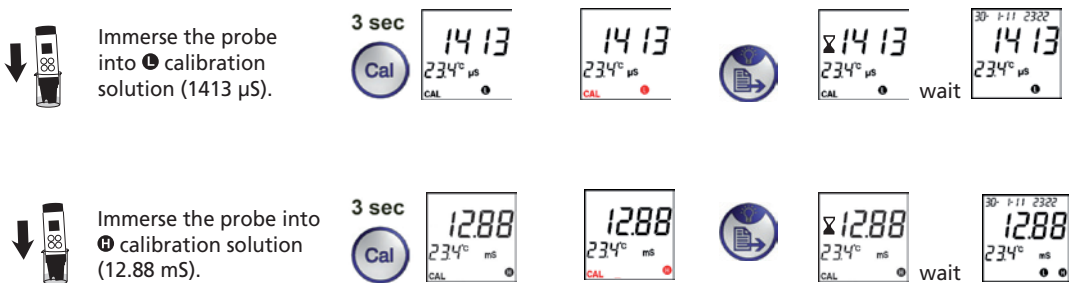
Characters in **RED** represent „Flashing symbols“.

- Re-Calibrate according to individual recommendations! Rinse the electrode with distilled water after each measurement.
- If temperature is out of range, „ERR“ will appear. Meter automatically returns to Measurement Mode.
- If the default reading is more than 30% out of standard buffer range, „ERR“ will appear.

E1. Auto Mode

Remove protective cap from the probe.
Power ON (see A)

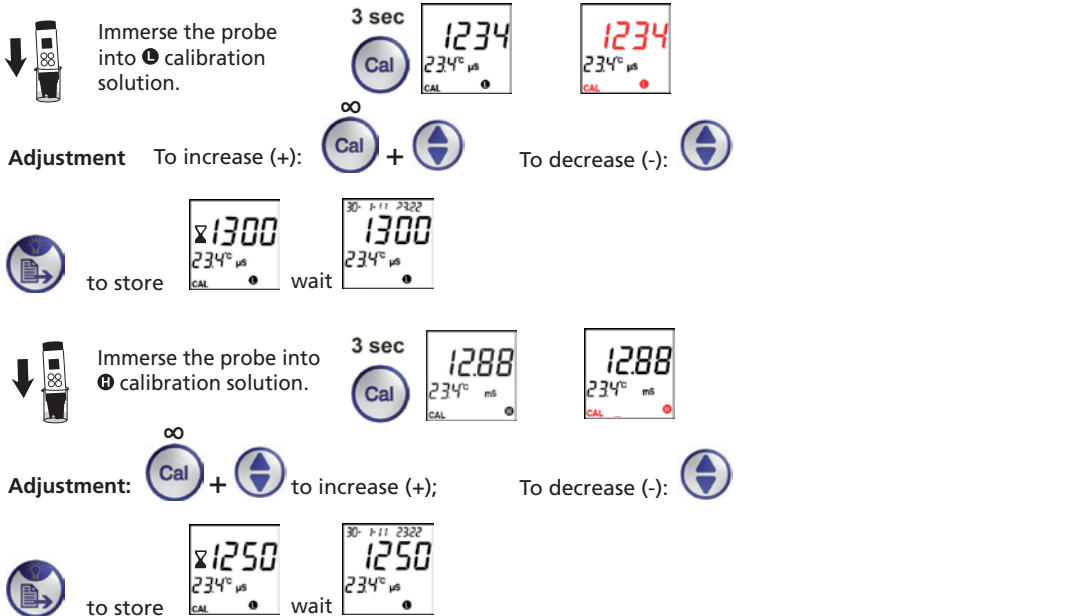
Auto-recognition for **1** : 1413 µS and **2** : 12.88 mS



E2. Manual Mode

Remove protective cap from the probe.
Power ON (see A)

1: Limited to 200 ~ 2000 µS; **2**: limited to 2.00 ~ 20.00 mS

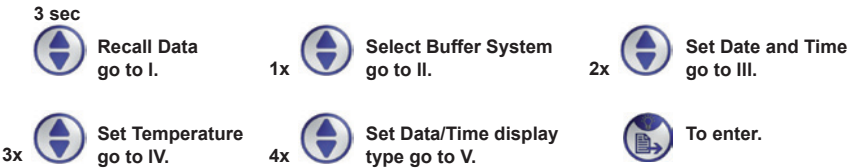


SETUP

F. System Setup

Characters in **RED** represent „**Flashing symbols**“.

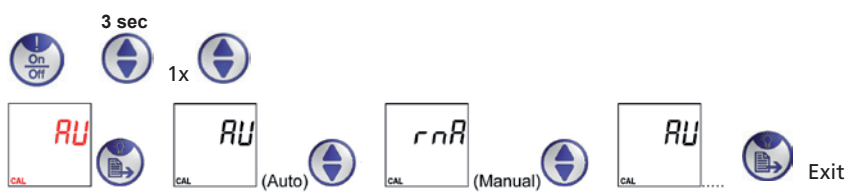
Unfreeze data first (see frontside B) before Menu selection.



I. Recall Data

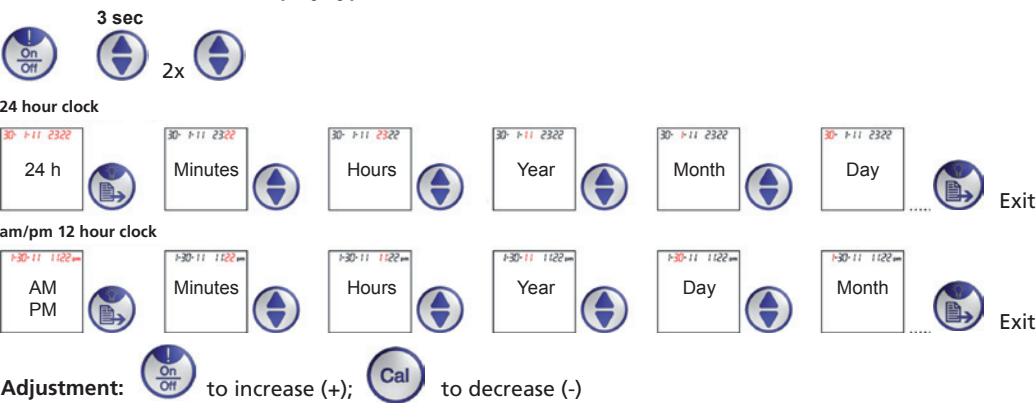


II. Select Calibration Mode



III. Set Date and Time

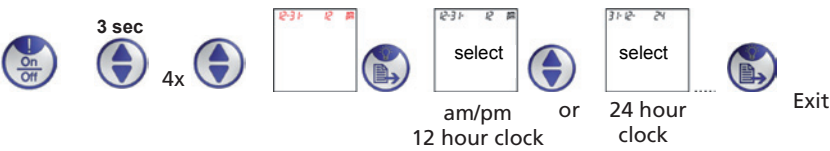
Select V. 'Set Data/ Time display type' first.



IV. Set Temperature system (°C/°F)



V. Set Data/Time display type



Error Code and Actions			
#	Description	Range	Actions
1	Electrode not installed or bad	Thermistor: 0.5k~100k Ω	Install or replace electrode
2	Not used		
3	Temperature out of range	0~60 °C	Bring solution to the temperature within range
4	Not used		
5	Calibrated value out of range	70%~130% (compare to the default value)	Re-calibrate or replace the electrode or use the default value (remove batteries)
6	Conductivity out of range	<20.00mS	Use other solution

SD70 Conductivity Specification/Features

#	Specification
1	Operating range: 0~60°C, <20.00mS
2	Automatic switch over μS and mS: μS:1~1999μS; mS: 2.00~20.00mS
3	1 or 2 points calibration for auto mode. Standard buffers used: 1413μS and/or 12.88mS
4	Up to 2 points calibration for manual mode, +/-50% adjustable value
5	Conductivity resolution: 1μS(<=1999μS) and 0.01mS(2.00~20.00mS); Accuracy: ±3%FS
6	Temperature resolution: 0.1°C; Accuracy: ±1°C. Selectable °C/°F system
7	Automatic temperature compensation (2%/°C)
8	Time and date display/stamp with 25 sets of data storage (non-volatile)
9	22x22mm LCD screen, with Yellow Green backlight
10	2x CR2032 batteries
11	Auto-power off to save battery (8 minutes inactivity)

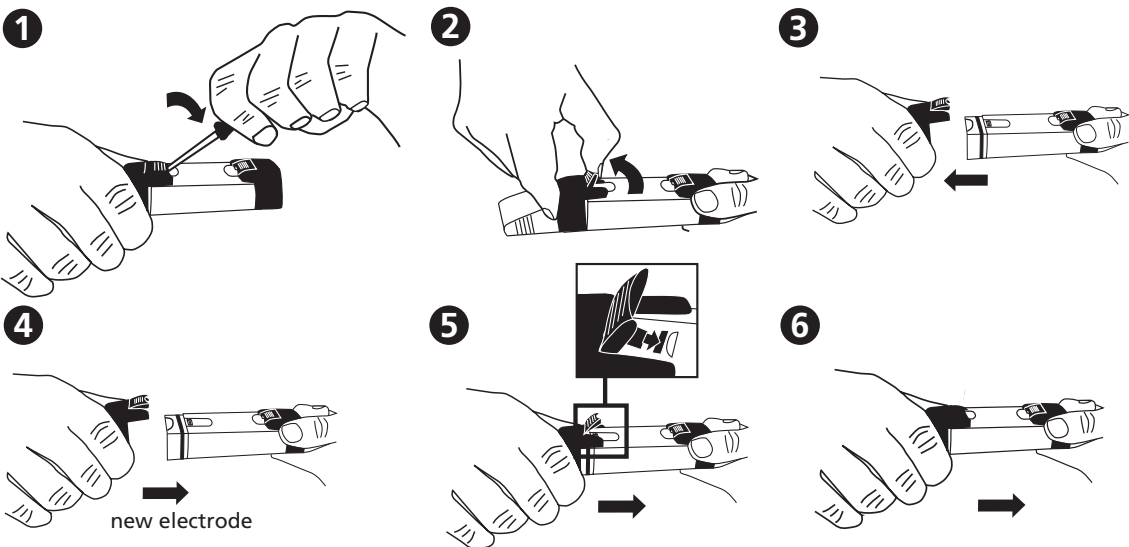
Content

- 1 Con Meter SD 70 in a robust plastic case with strap
- 2 Batteries
- 1 Instruction Manual
- Order Code: **19 48 02**

Accessories

- 195 00 17 Battery CR 2032 (2 Batteries required)
- 19 48 22 Replacement electrode
- 38 48 01 Beaker, 100 ml

VI. Electrode Replacement



Instruction manuals available in further languages, visit www.lovibond.com